



House # 169, Lane # 3, New DOHS,  
 Mohakhali, Dhaka- 1206,  
 Bangladesh  
 Phone : +88 02-9888184, 9858064  
 Hot Line : +88 01934222777

Whilst every reasonable care has been taken in preparing this brochure, the developer and its agents cannot be held responsible for any inaccuracies. All statements are believed to be correct but are not to be regarded as statements or representations of facts. All information and specifications are subject to change. All plans are subject to any amendments approved or may be approved by the relevant authority.



Architectural Consultant  
**CHINTON ARCHITECTS**

Artist's rendering and picture are impressions only, while the illustrations of interiors are only decor suggestions and none can be regarded as representations of facts. Floor areas are approximate measurements and subject to final survey.

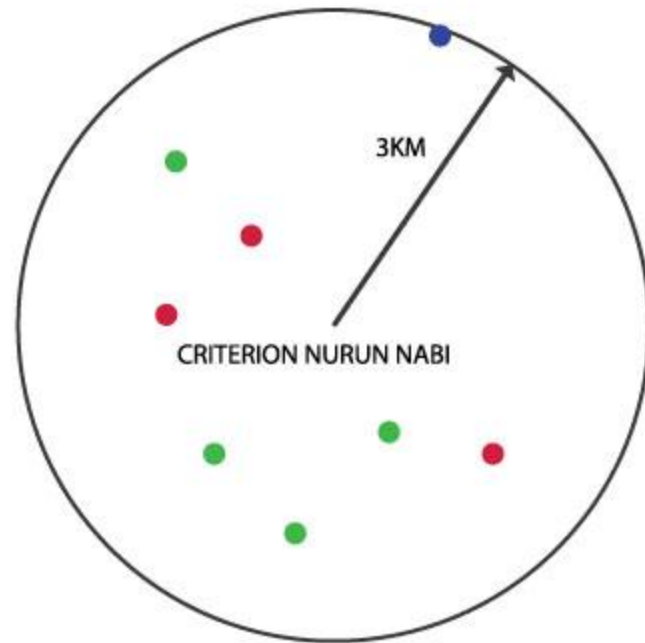
**criterion** nurun nabi

## LOCATION MAP

CRITERION Nurun Nabi is located at road 81, plot 8h, Gulshan 2, Dhaka. The plot faces the north-east orientation.

The location is completely a residential neighbourhood, tucked away in a quiet corner of north Gulshan.

As seen in the location map beside, some of the schools parks and hospital within the 5 km walk.



- UNITED HOSPITAL
- SUPERMARKETS
- SCHOOLS

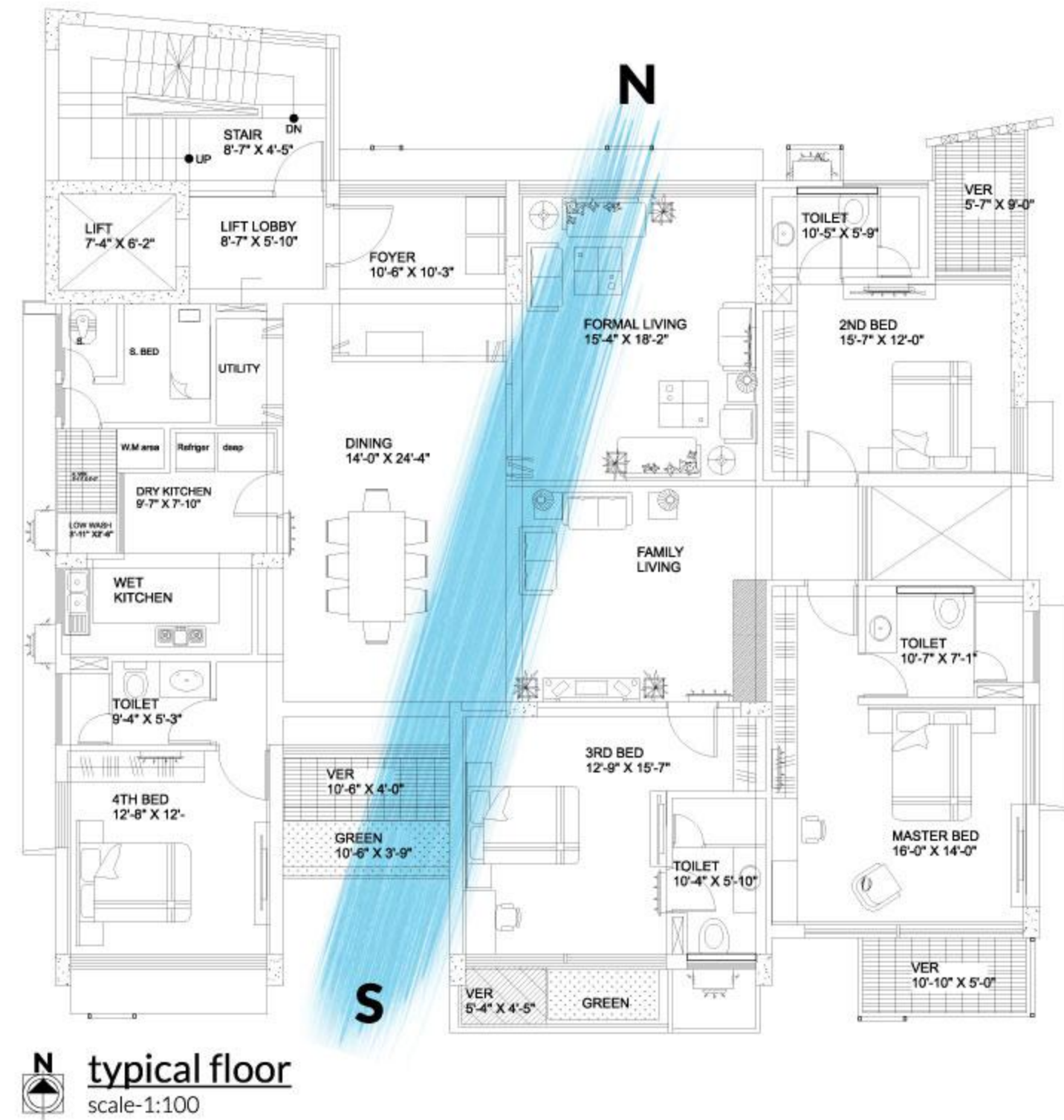


site location map

## SITE ORIENTATION

The design criteria for us was to orient the entire building in such a manner to maximise the north south air and wind circulation path. So that in each unit the bedrooms face the south.

The design concept behind it, was to create a very clean minimalist building with spurts of green in an dense but quiet residential neighbourhood.



6



7

*"Home is where our story begins..."*

*"There is nothing more important than a good, safe, secure home."*

7

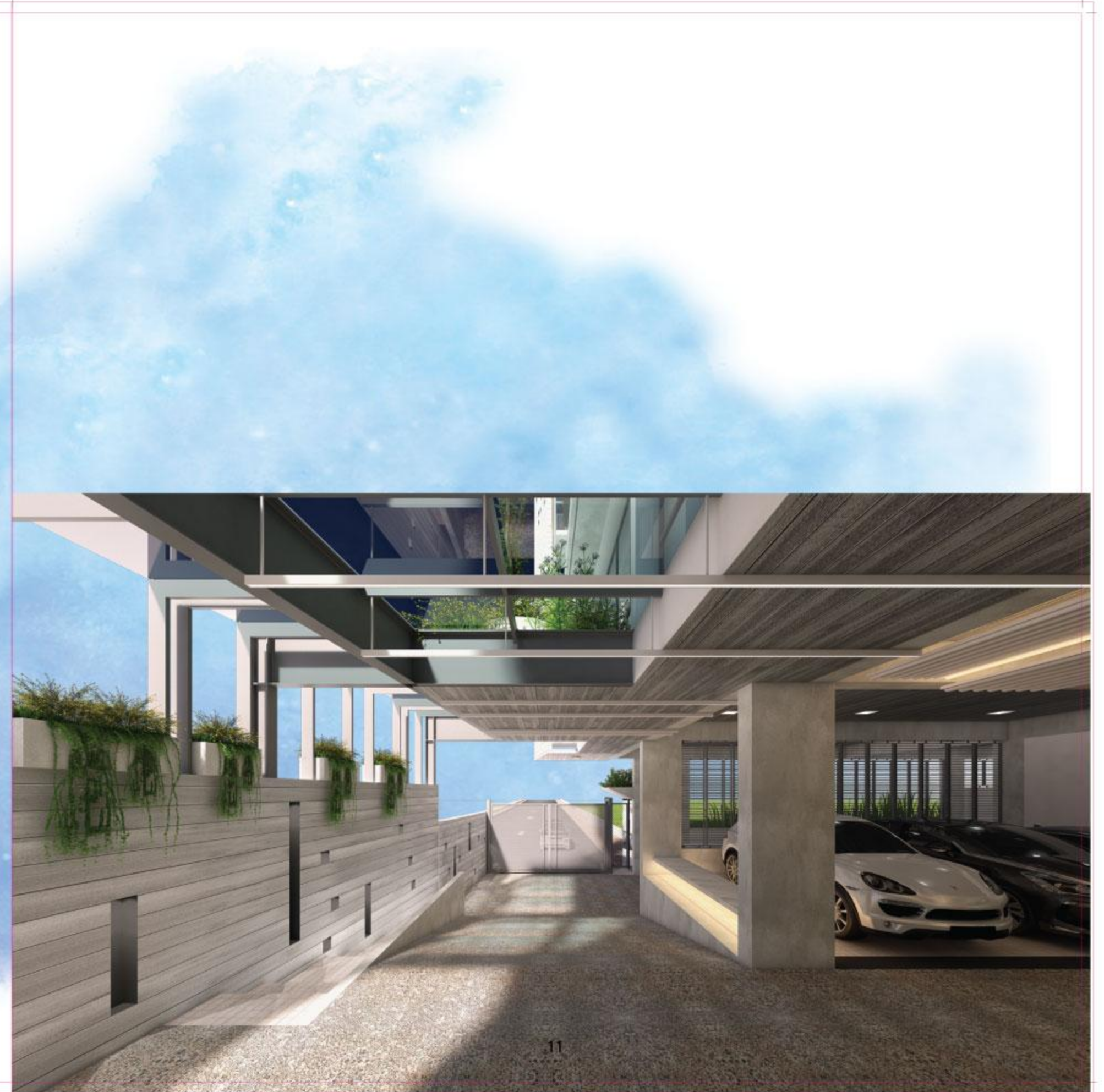


## facilities

- Private lift lobbies for all apartments.**
- Reception area in the ground floor with an attractive Concierge desk.**
- Provision for CCTV connection with main gate to every flat.**
- One stand-by generator for use of the lift, water pump, stair & common space lighting.**  
**Also the generator will serve all points in each apartment.**
- There will be a roof top community space with an attached toilet and kitchenette along with landscaped green area.**



**N** semi basement floor plan  
scale-1:100



EACH UNIT: 2 PARKING



**N** ground floor 3d view  
scale-1:100

APT SIZE: 3700 SFT



**N** typical floor 3d view  
scale-1:100

*"All language is longing for home"*  
-Rumi







**N** roof top 3d view  
scale-1:100



### Community spaces:

Community spaces can have large impact on the development of social networks and the subsequent values of community participation and civic engagement. For example, common spaces where members of a community can interact can help build and sustain social networks.

Our rooftop room provides for a perfect place to hold a meeting or even a get together to watch a cricket match. The goal was to create a place that has both a strong sense of community and a comfortable image, as well as a setting and activities and uses that collectively add up to something more than the sum of its often simple parts.



**CRITERION DEVELOPERS LIMITED**