

Some Of Our Completed Projects



Criterion Chalet, Barani DOHS



Criterion Zephyr, Baridhara



Criterion Seleena, New DOHS



Criterion Shopno Nibash, Uttara Sector-04



Criterion Dakhina Paban, Bashundhara



Criterion Shopno Bilash, Uttara Sector-13



Criterion Zen, Lalmatia



Criterion Laboni, Dhanmondi



Criterion Canopy, Tajmahal Road



redefining lifestyle
**Criterion
Developers
Limited**
CORPORATE OFFICE

Road #5, House # 23
Baridhara, Diplomatic Zone
Dhaka-1212, Bangladesh
Phone : +88-02-9858064
Cell : 01195010401, 01195010403
01195010404, 01195010405
E-mail : info@criteriodevelopers.com
www.criteriodevelopers.com

Architectural Consultant
CHINTON Architects

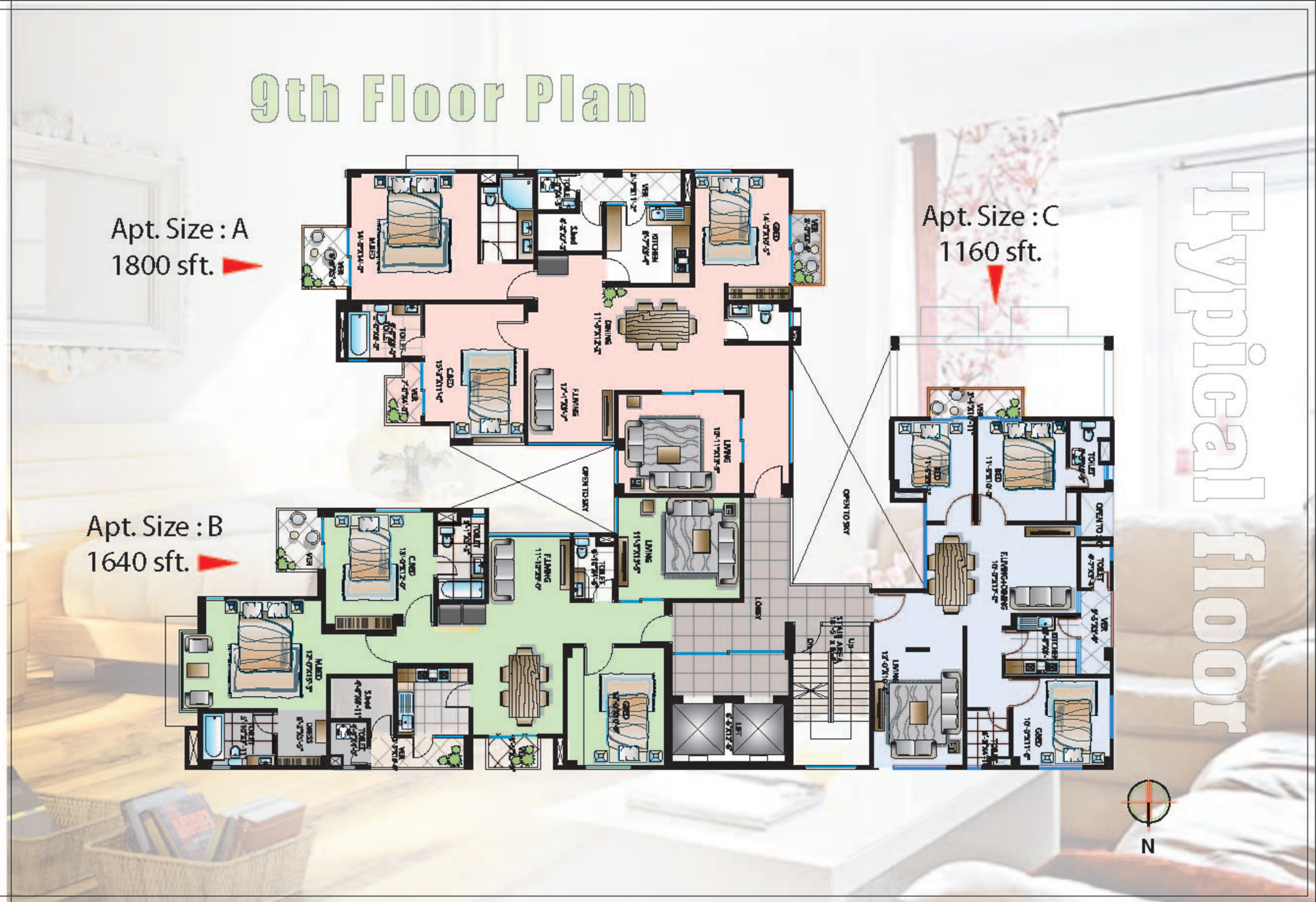
Whilst every reasonable care has been taken in preparing this brochure, the developer and its agents cannot be held responsible for any inaccuracies. All statements are believed to be correct but are not to be regarded as statements or representations of facts. All information and specifications are current at the time of go into press and are subject to change as may be required and cannot form part of the contract. All plans are subject to any amendments approved or may be approved by the relevant authority. Artists rendering and picture are impressions only while illustrations of interiors are only decor suggestions and none can be regarded as representations of facts. Floor areas are approximate measurements and subject to final survey.

MEMBER REHAB



CRITERION Peony

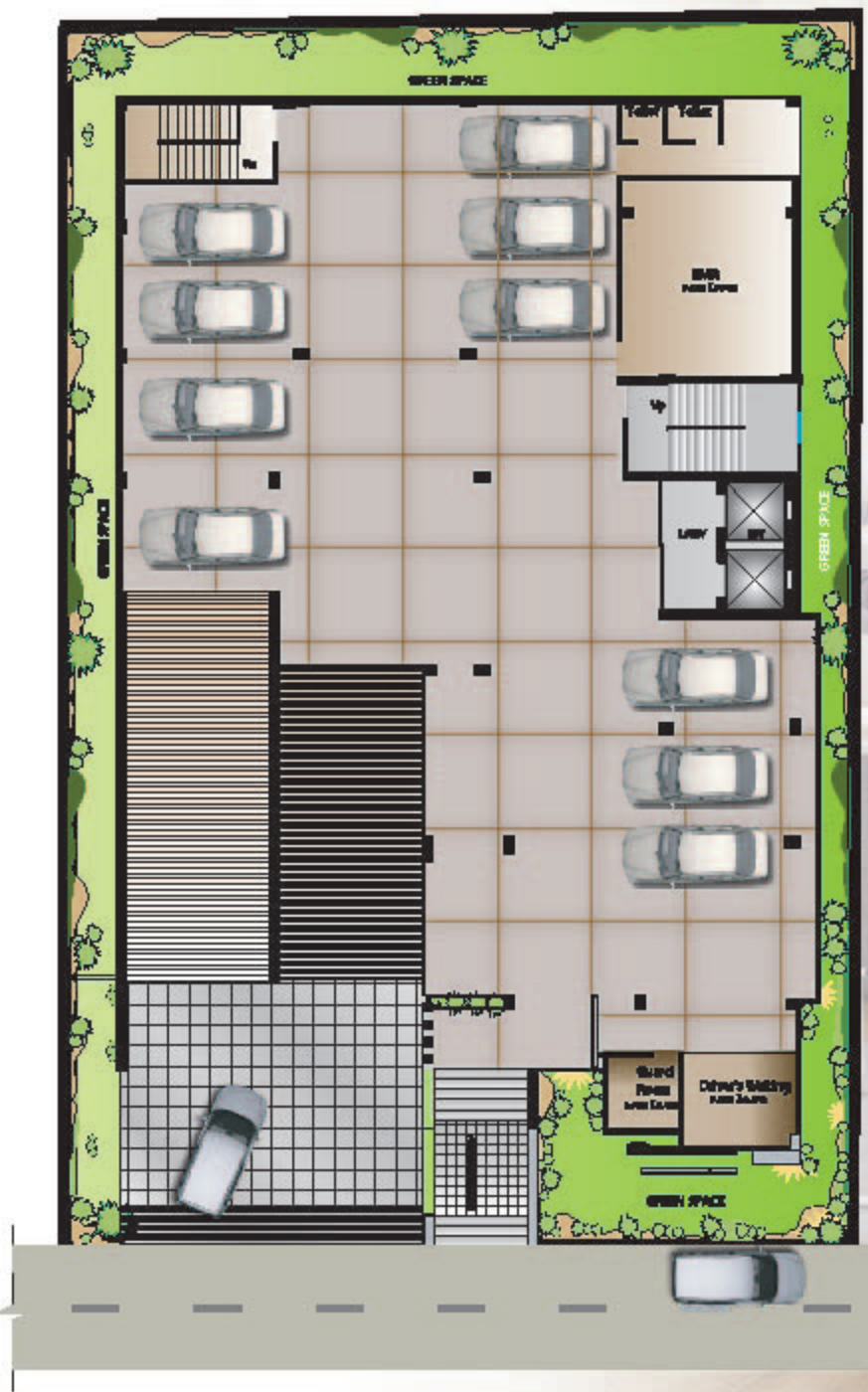




Basement Plan



Ground Floor Plan



Typical floor

Typical floor

2nd Floor Plan

Apt. Size : A
1800 sft.

Apt. Size : B
1640 sft.

Apt. Size : C
1400 sft.

